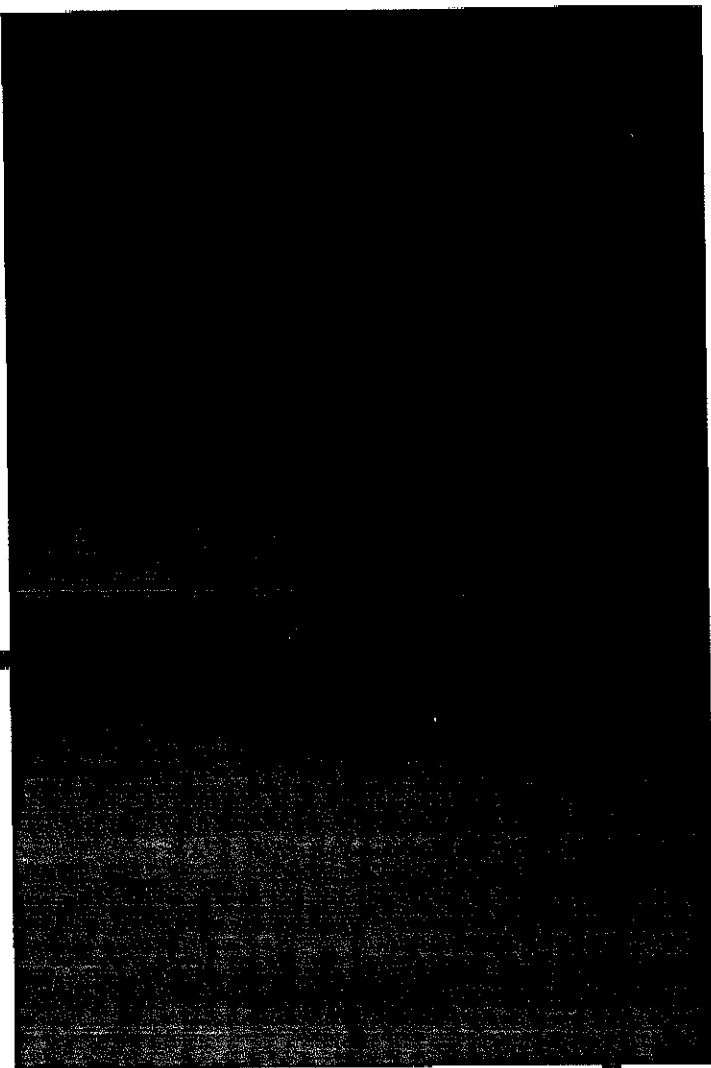
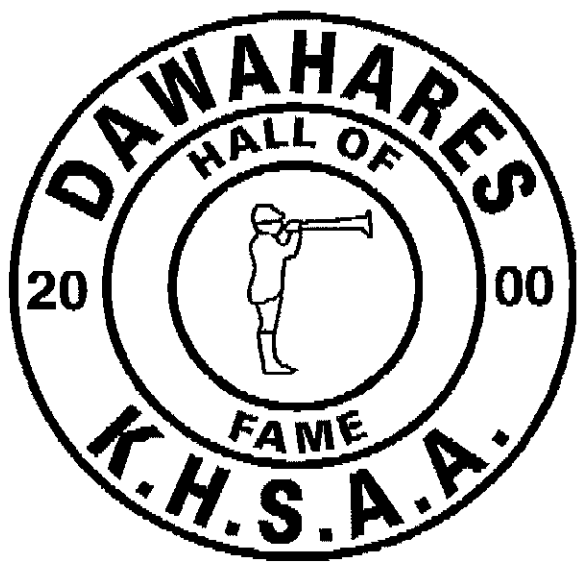


ATTN! KEN ZIPETT



W.B. Owen

A native of Washington County, W.B. Owen coached boys' and girls' basketball, taught classes and served as Superintendent at Horse Cave High School. He coached boys' basketball from 1924 to 1943, during which time his teams won seven regional titles. The 1925 and 1926 Caveman advanced to the quarterfinals of the Boys' State Basketball Tournament and from 1932 to 1935, Coach Owen's teams won 67 of 69 games. The only two losses were to Ashland in the 1933 finals of the State Basketball Tournament and to Danville in the 1934 semi-finals of the event. Owen coached girls' basketball from 1925 to 1931, guiding Horse Cave to State Tournament appearances in 1930 and again in 1931. After ending a successful coaching career, Owen served as a highly-respected administrator for Leitchfield, Green County, Greensburg and Taylor County High Schools. He also served on the KHSAA Board of Control from 1936-47, the last six years as vice-president.

reduced for fop